





**MODERN LIVING  
MADE EASY**



**CRL | STONE**







# Contents

---

About CRL Quartz .....	07
The Collection.....	08
The Renaissance Collection.....	10
The Marble Collection .....	34
The Rock Collection .....	64
The White Collection .....	78
Features & Advantages .....	87
Care & Maintenance .....	88
Technical Data Sheet .....	89
Ceralsio Ceramic Surfaces .....	90



COLORADO - QZ111

## About CRL Quartz

---

CRL Stone has developed a comprehensive range of beautiful, engineered quartz surfaces, created to meet the demands of modern living. Hard wearing and easy to care for, CRL Quartz is ideal for the kitchen and bathroom where durability and flexible design are paramount.

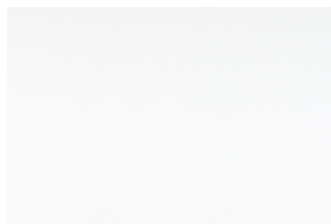
CRL Quartz is scratch, heat and stain resistant. Unlike natural materials such as marble, CRL Quartz never needs to be sealed. Requiring minimum maintenance to keep it looking as good as new, the non-porous surface makes cleaning simple, with soap and water or a mild detergent is all that is needed.

Offering a versatile design solution appropriate for any setting, CRL Quartz is available in a choice of over 40 colours, with a polished or honed finish. In thicknesses of 20mm and 30mm, the surface comes in an extra-large format slab, allowing for greater consistency in design over large spaces such as kitchen worktops.

CRL Quartz comes with a 25 year residential warranty and 10 year commercial warranty for added peace of mind. Visit [crlquartz.co.uk](http://crlquartz.co.uk) to register your surface and activate your warranty.

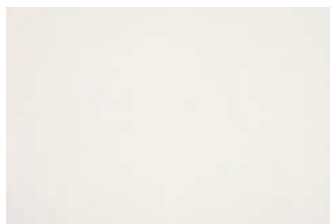






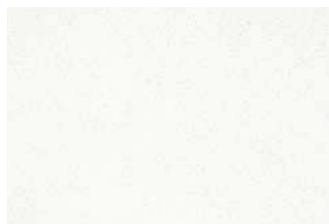
Ultra White  
QZ100

Page 79



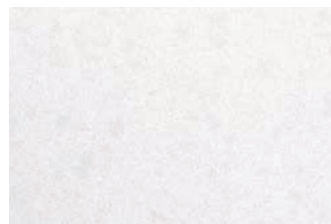
Chalk  
QZ130

Page 85



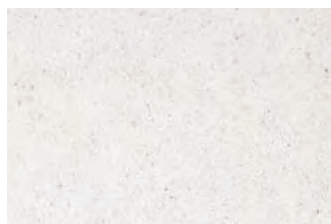
Polar White  
QZ131

Page 85



Ice  
QZ102

Page 82



Arctic Shimmer  
QZ138

Page 82



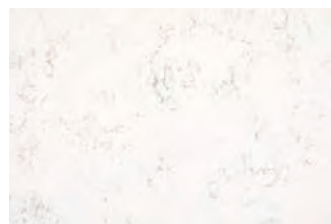
Quartz Reflection  
QZ126

Page 80



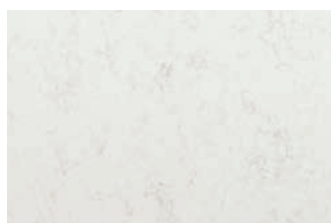
White Water  
QZ119

Page 20



White Carrara  
QZ101

Page 32



Carrara  
QZ122

Page 46



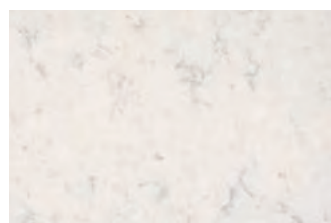
Verona  
QZ127

Page 42



Calacatta Dorado  
QZ148

Page 54



Knightsbridge  
QZ103

Page 30



Statuario Bianco  
QZ135

Page 10



Vesuvius  
QZ154

Page 62



Antonella  
QZ145

Page 34



Calacatta  
QZ143

Page 38



River White  
QZ110

Page 24



Vicenza  
QZ136

Page 12



Lugano  
QZ151

Page 58



Monte Bianco  
QZ132

Page 14



Messina  
QZ146

Page 50



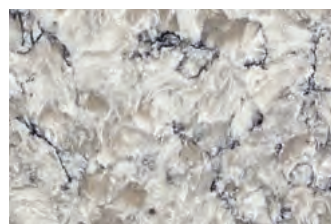
Atlantic Gris  
QZ134

Page 18



Montana Gris  
QZ133

Page 16



Colorado  
QZ111

Page 26



Regency White  
QZ123

Page 40



Kalahari  
QZ125

Page 64



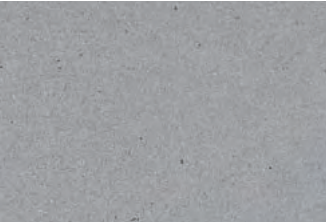
Savannah  
QZ113

Page 44



Sahara  
QZ109

Page 28



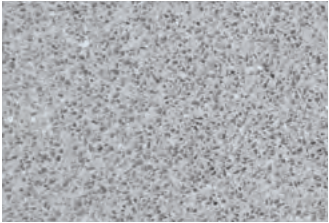
Concrete Gris Honed  
QZ106

Page 72



Grey Mist  
QZ108

Page 22



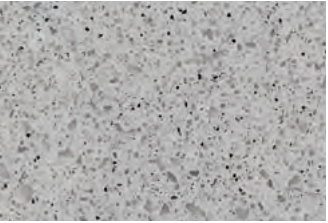
Silver Shimmer  
QZ141

Page 68



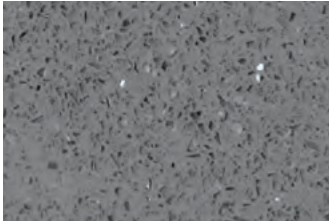
Urban Grey  
QZ152

Page 66



Venetian Arte  
QZ149

Page 74



Grey Reflection  
QZ137

Page 70



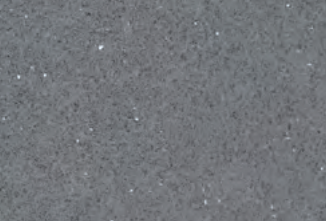
Pearl Grey  
QZ144

Page 36



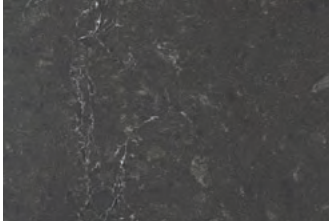
Firenze  
QZ147

Page 52



Grey Shimmer  
QZ140

Page 68



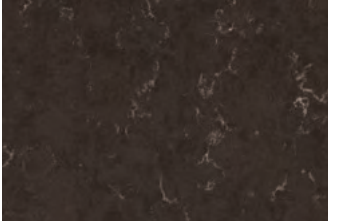
Siena Honed  
QZ150

Page 56



Forest  
QZ129

Page 65



Chestnut  
QZ118

Page 48



Staccato  
QZ153

Page 60



Midnight  
QZ128

Page 76



[www.crlquartz.co.uk](http://www.crlquartz.co.uk)



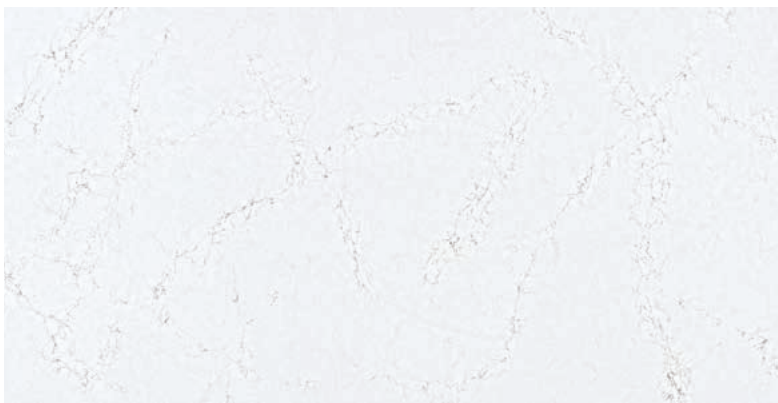


# Statuario Bianco

---

QZ135

With a distinctive grey veining on a crisp, white background, Statuario Bianco has a Statuario marble-inspired look that ensures it will be the ideal surface for any kitchen looking for a bold, striking impact.



Slab Size: 3300 x 1650 mm  
Finish: Polished  
Thickness: 20 mm / 30 mm

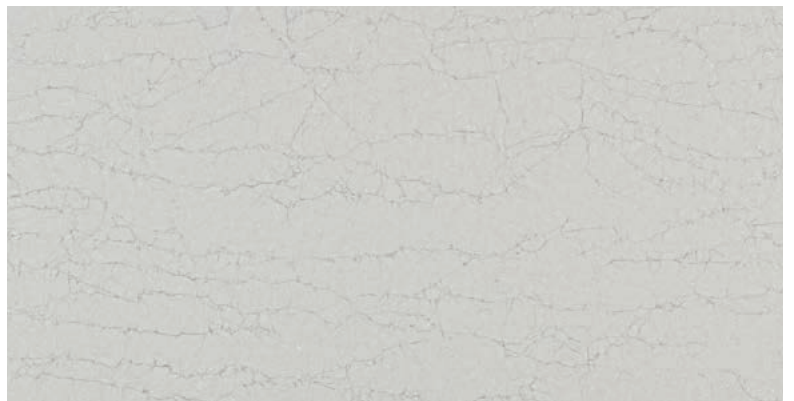


# Vicenza

---

QZ136

The perfect contrast to trending bold colours in interior design, Vicenza is striking to the eye with its movement of colours from soft whites and greys to dark, bold veins.



Slab Size: 3300 x 1650 mm

Finish: Polished

Thickness: 20 mm / 30 mm







MONTE BIANCO - QZ132



# Monte Bianco

---

QZ132

Giving visual interest and character to any kitchen or bathroom, Monte Bianco is a marble-effect surface that mixes on-trend shades of whites and greys. It is perfect for any style of room as it works in harmony with natural materials and colours.



Slab Size: 3300 x 1650 mm  
Finish: Polished  
Thickness: 20 mm / 30 mm





## Montana Gris

---

QZ133

Bold grey veining gives Montana Gris a unique stand-out look in a style that has all the beauty of real marble with none of the maintenance hardships, for a beautiful surface that works in virtually any interior space.



Slab Size: 3300 x 1650 mm

Finish: Polished

Thickness: 20 mm / 30 mm





MONTANA GRIS - QZ133





# Atlantic Gris

---

QZ134

Tapping into the trend for grey shades in the kitchen, Atlantic Gris is inspired by nature and brings natural elements into the home of any owner in search of an eye-catching design.



Slab Size: 3300 x 1650 mm

Finish: Polished

Thickness: 20 mm / 30 mm





## White Water

---

QZ119

White Water introduces a subtle marble effect into the kitchen or bathroom and makes a very special look paired with stainless steel or bold, matte black appliances.



Slab Size: 3300 x 1650 mm  
Finish: Polished  
Thickness: 20 mm / 30 mm





WHITE WATER - QZ119





# Grey Mist

---

QZ108

Responding to the trend for grey in interior design, Grey Mist combines easily with any colour and any material for a versatile surface solution in the modern kitchen.



Slab Size: 3300 x 1650 mm  
Finish: Polished  
Thickness: 20 mm / 30 mm



## River White

---

QZ110

River White features a striking marble pattern that draws the eye and works in tandem with other popular materials for the kitchen, from stainless steel to timber.



Slab Size: 3300 x 1650 mm

Finish: Polished

Thickness: 20 mm / 30 mm





RIVER WHITE - QZ110



COLORADO - QZ111



# Colorado

---

QZ111

Colorado will blend seamlessly into its surroundings while being a centre-piece with its own natural style and substance. Try it with blue cabinets for a wow factor.



Slab Size: 3300 x 1650 mm  
Finish: Polished  
Thickness: 20 mm / 30 mm



# Sahara

---

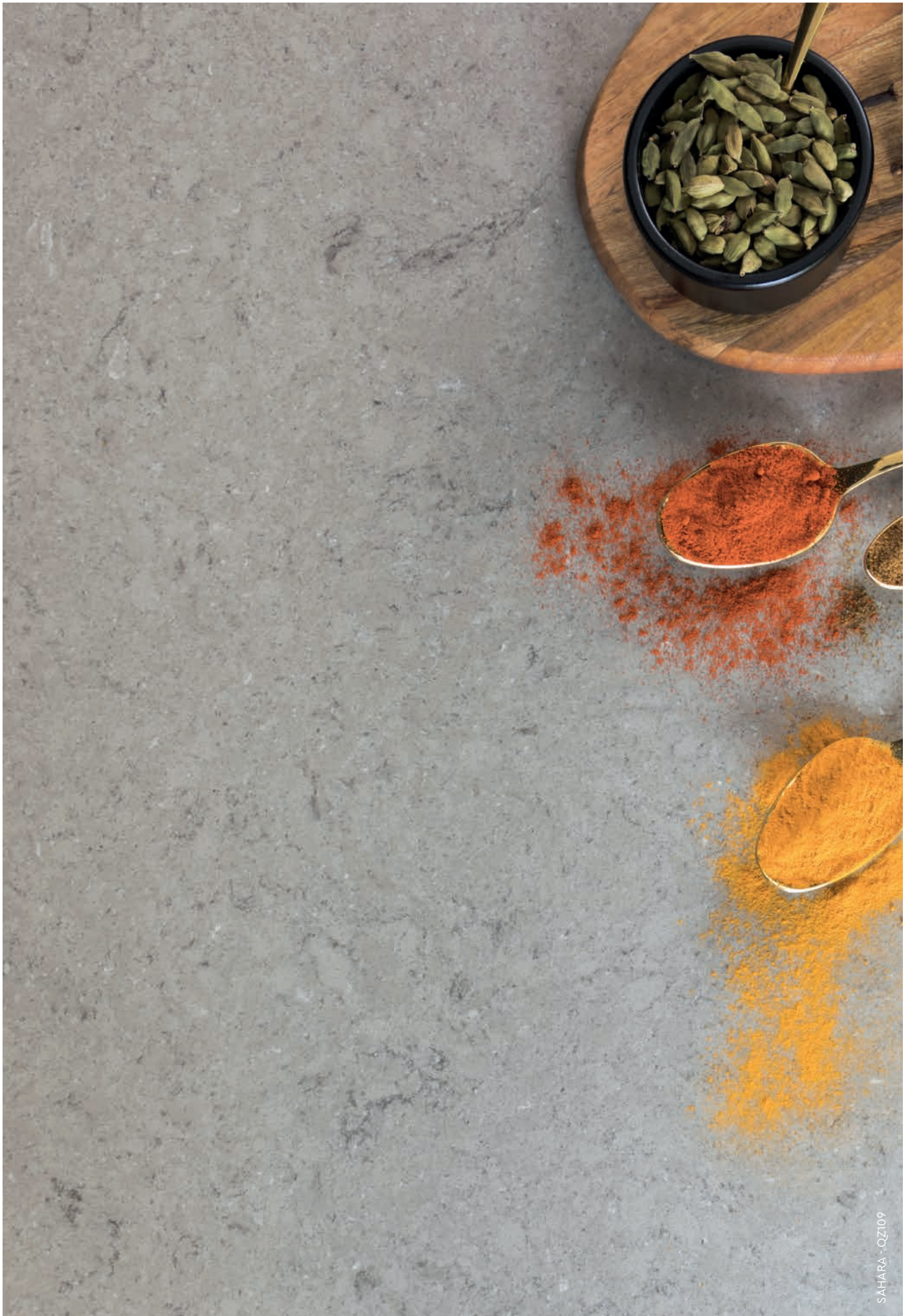
QZ109

Sahara is an earthy quartz surface that brings warmth and character to any interior.



Slab Size: 3300 x 1650 mm  
Finish: Polished  
Thickness: 20 mm / 30 mm





SAHARA - QZ109





# Knightsbridge

---

QZ103

The perfect complement to the colour-blocking trend in the kitchen, Knightsbridge has a subtle veining that gives it a marble-inspired style of its own, working harmoniously with bold strong colours and more neutral hues.



Slab Size: 3300 x 1650 mm

Finish: Polished

Thickness: 20 mm / 30 mm



## White Carrara

---

QZ101

Inspired by Carrara marble in a lighter shade of white, White Carrara works virtually with any furniture and wall colour palette, from neutral, calming shades to contrasting, dark colours.



Slab Size: 3300 x 1650 mm

Finish: Polished

Thickness: 20 mm / 30 mm







ANTONELLA - QZ145

# Antonella

---

QZ145

Combine the crisp white background of Antonella with dark cabinets for a dramatic effect in any setting. With a marble-inspired grey and brown pattern running throughout the surface, Antonella works in harmony with raw materials, for an industrial look that has a distinctly professional edge.



Slab Size: 3300 x 1650 mm  
Finish: Polished  
Thickness: 20 mm / 30 mm





PEARL GREY - QZ144



# Pearl Grey

---

QZ144

Responding to the growing trend for natural grey tones combined with nature-inspired materials in interior design, Pearl Grey boasts a subtle white veining throughout the light grey base, echoing the natural elegance of marble.



Slab Size: 3200 x 1600 mm

Finish: Polished

Thickness: 20 mm / 30 mm



# Calacatta

QZ143

Calacatta is a distinctly individual and highly versatile marble-inspired surface. Team it with virtually any other material, colour and finish and it will work in complete harmony, while adding a luxurious, high-end look to the setting.



Slab Size: 3200 x 1600 mm

Finish: Polished

Thickness: 20 mm / 30 mm









# Regency White

---

QZ123

With its neutral tones, Regency White works in virtually any interior design in search for a worktop that will last a lifetime.



Slab Size: 3200 x 1600 mm

Finish: Polished

Thickness: 20 mm / 30 mm

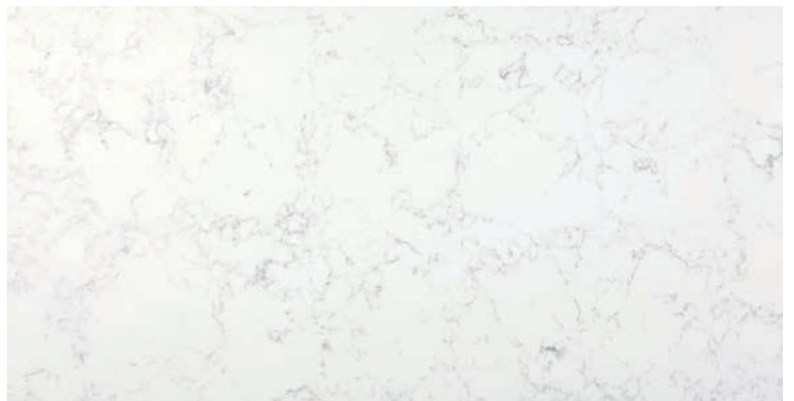


## Verona

---

QZ127

Verona taps into the trend for grey tones in the kitchen, as a subtle pastel shade that combines beautifully with stainless steel appliances and a wide variety of contemporary cabinets.



Slab Size: 3200 x 1600 mm

Finish: Polished

Thickness: 20 mm / 30 mm





VERONA - QZ127





# Savannah

---

QZ113

Creating a light, uplifting ambiance in the kitchen, Savannah has all the aesthetic properties of genuine marble, with its distinctive veining that will provide an individual finish.



Slab Size: 3300 x 1650 mm

Finish: Polished

Thickness: 20 mm / 30 mm

# Carrara

---

QZ122

Carrara is a beautiful, luxurious surface with all the aesthetic advantages of Carrara marble without the drawbacks. Pair it with bold, blue cabinets and raw, industrial walls to complete the look.



Slab Size: 3200 x 1600 mm

Finish: Polished

Thickness: 20 mm





CARRARA - QZ122





CHESTNUT - QZ118



# Chestnut

---

QZ118

Dark and sophisticated, Chestnut has a beautiful light grey veining on a dark brown background. Combine Chestnut with light cabinetry, stainless steel appliances and wood for a design that will be timelessly elegant.



Slab Size: 3300 x 1650 mm  
Finish: Polished  
Thickness: 20 mm / 30 mm



## Messina

---

QZ146

Inspired by marble, Messina brings nature indoors with its soft white base reflecting light and bringing brightness to any setting, while the subtle veining throughout the surface adds a touch of glamour and individuality.



Slab Size: 3200 x 1600 mm

Finish: Polished

Thickness: 20 mm / 30 mm





MESSINA - QZ146





FIRENZE - QZ147

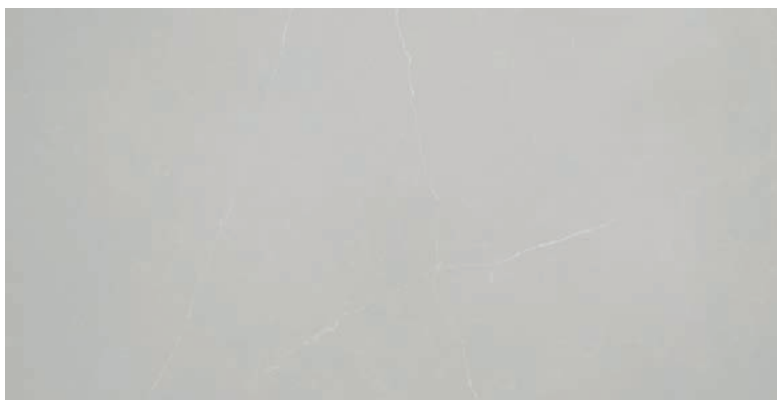


# Firenze

---

QZ147

Delicately clean and with a subtle veining to add contrast, Firenze has all the appeal of marble with none of the headaches. Wonderfully versatile as well as being incredibly durable, Firenze is a quartz surface that will combine effortlessly with virtually any other material and colour, in any setting.



Slab Size: 3200 x 1600 mm

Finish: Polished

Thickness: 20 mm / 30 mm

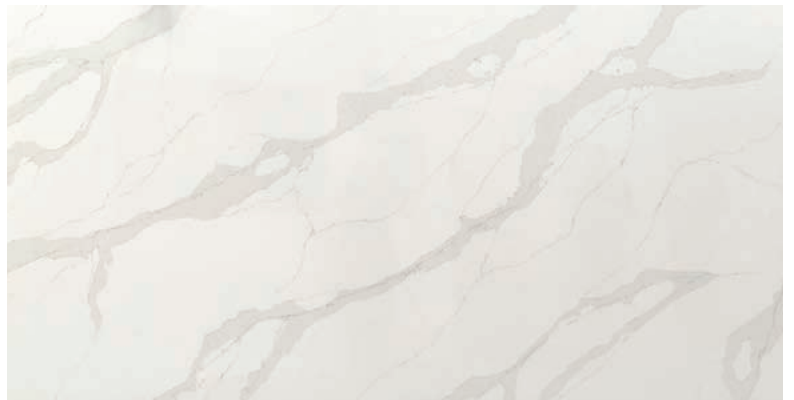


## Calacatta Dorado

---

QZ148

With its dramatic veining Calacatta Dorado is an unmistakably luxurious surface that is perfect for making a statement. Drawing the eye with its beautiful and individual sense of character, Calacatta Dorado will bring elegance to proceedings whether used as a splashback or as a waterfall end on a kitchen island.



Slab Size: 3200 x 1600 mm

Finish: Polished

Thickness: 20 mm / 30 mm





CALACATTA DORADO - QZ143





SIENA HONED - QZ150



# Siena Honed

---

QZ150

Dark and sophisticated, Siena Honed is a surface with all the beauty of marble and all the practical benefits of quartz. The dark grey base coupled with chalky white lines give the surface its authentic stone appearance.



Slab Size: 3300 x 1650 mm  
Finish: Honed  
Thickness: 20 mm / 30 mm



## Lugano

---

QZ151

A contemporary take on natural stones such as granite, Lugano is a quartz surface that has an intricate veining to make each and every slab a one-off. Create an organic, urban feel in the kitchen or bathroom with Lugano.



Slab Size: 3300 x 1650 mm

Finish: Polished

Thickness: 20 mm / 30 mm





LUGANO - QZ151



STACCATO - QZ153



# Staccato

QZ153

Bringing warmth and drama to interiors, Staccato draws its influence from the trend for dark shades in the home, with a marble-inspired pattern that is boldly distinctive and works in excellent contrast to the darker palette beneath. Lighten the mood by contrasting Staccato with light coloured furniture or combine with similar dark shades for a sultry look.



Slab Size: 3200 x 1600 mm

Finish: Polished

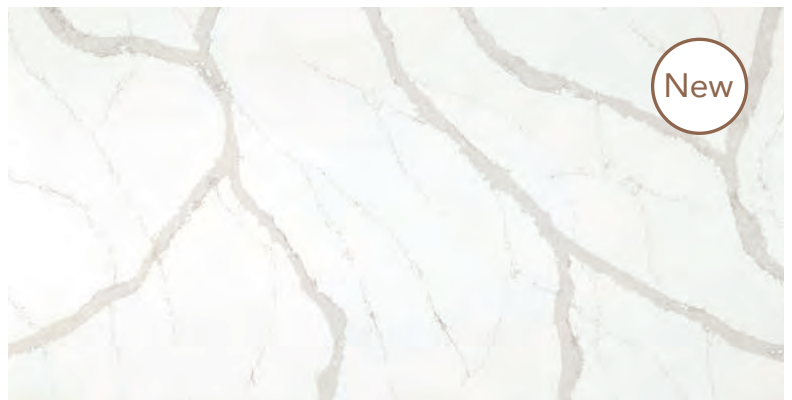
Thickness: 20 mm / 30 mm



# Vesuvius

QZ154

Bold patterning on surfaces adds opulence and luxury to your home and none more so than with Vesuvius. This beautiful quartz is not only highly practical for rooms like the kitchen, it is also undeniably striking. Inspired by classic marble and with a distinctive natural feel, Vesuvius boasts a distinctive pattern that will make it into an instant focal point whether used on an island unit, as a hardwearing work surface or as an eye-catching splashback.



Slab Size: 3300 x 1650 mm  
Finish: Polished  
Thickness: 20 mm / 30 mm





VESUVIUS - QZ154



KALAHARI - QZ125



# Forest

---

QZ129

The warm, earthy tones of Forest work in harmony with on trend materials including wood and metal, adding a sense of character to the kitchen.



Close up view

Slab Size: 3200 x 1600 mm

Finish: Polished

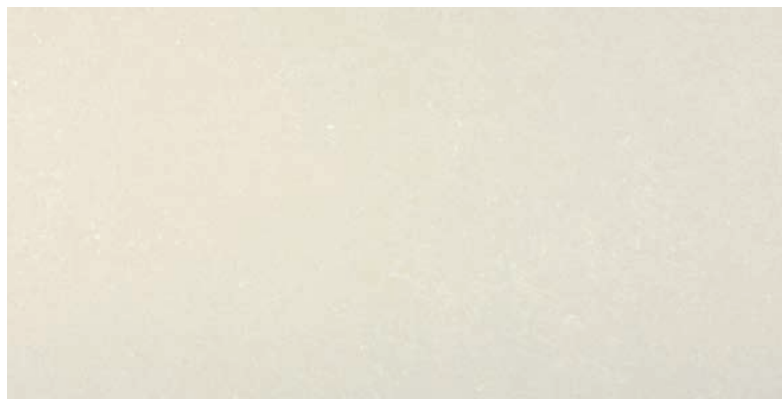
Thickness: 20 mm / 30 mm

# Kalahari

---

QZ125

A soft beige background with a subtle, white veining adds warmth to the kitchen, with Kalahari emulating the natural beauty of stones.



Close up view

Slab Size: 3200 x 1600 mm

Finish: Polished

Thickness: 20 mm / 30 mm





# Urban Grey

---

QZ152

Timelessly elegant and wonderfully versatile, grey is a colour that will never go out of fashion, with Urban Grey giving this must-have shade a further contemporary twist. The subtle fleck running through this quartz surface makes it simple to combine with virtually any colourway and material in the kitchen or bathroom, giving instant revitalisation in any space.



Slab Size: 3200 x 1600 mm

Finish: Polished

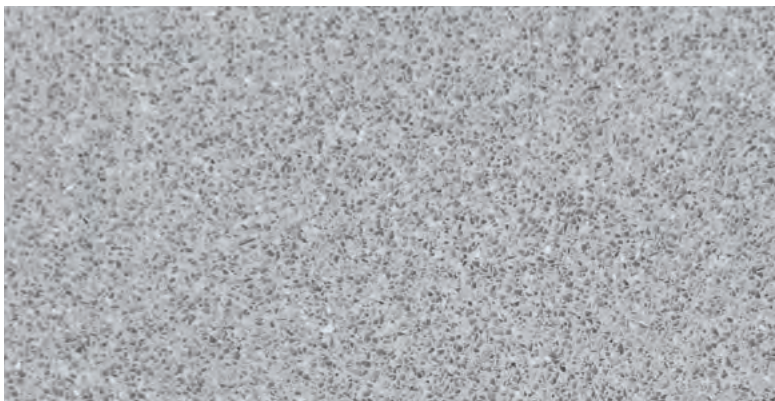
Thickness: 20 mm / 30 mm

# Silver Shimmer

---

QZ141

Adding a contemporary edge to the kitchen or bathroom, Silver Shimmer brings new life to earthy and grey tones with its subtle sparkle that catches the light.



Close up view

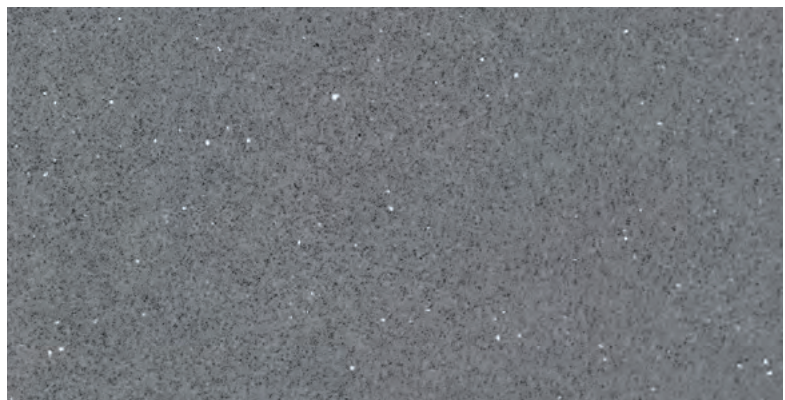
Slab Size: 3200 x 1600 mm  
Finish: Polished  
Thickness: 20 mm / 30 mm

# Grey Shimmer

---

QZ140

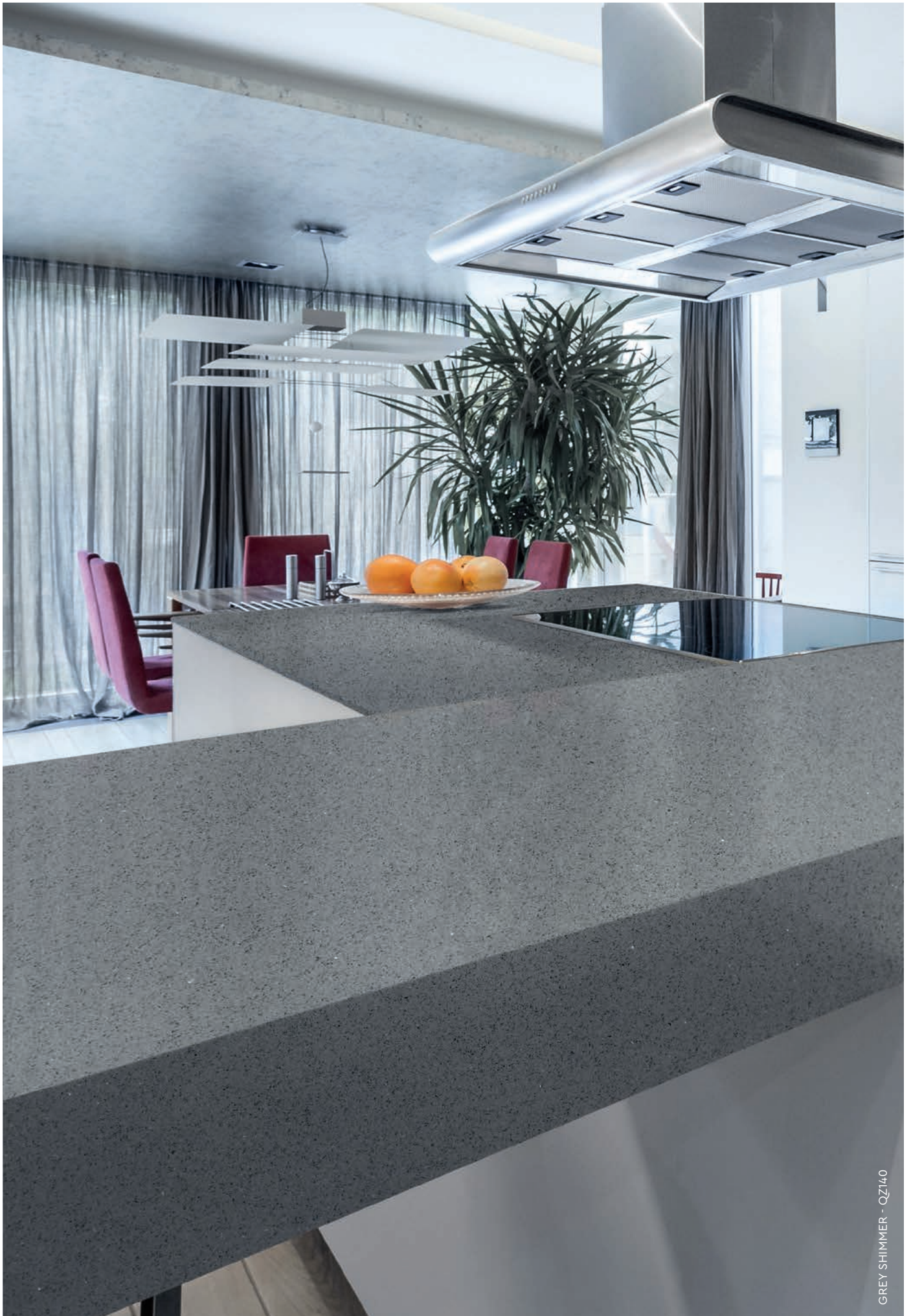
Add a touch of sparkle and glamour to the kitchen or bathroom with Grey Shimmer. It is the ideal material to make any contemporary setting really shine as it works comfortably amidst virtually any colour scheme.



Close up view

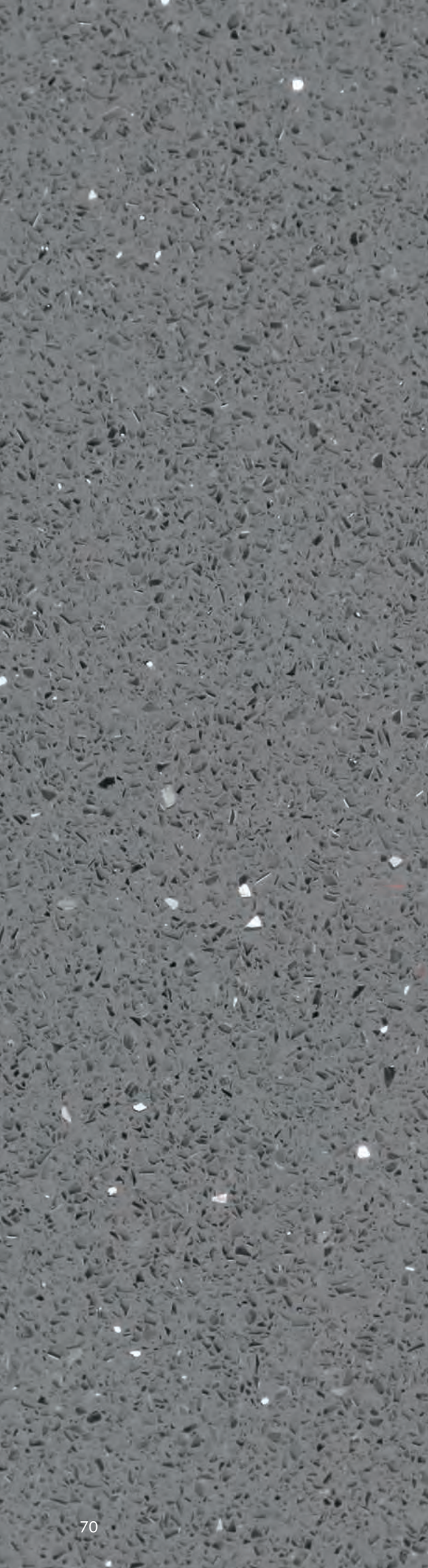
Slab Size: 3200 x 1600 mm  
Finish: Polished  
Thickness: 20 mm / 30 mm





GREY SHIMMER - QZ140



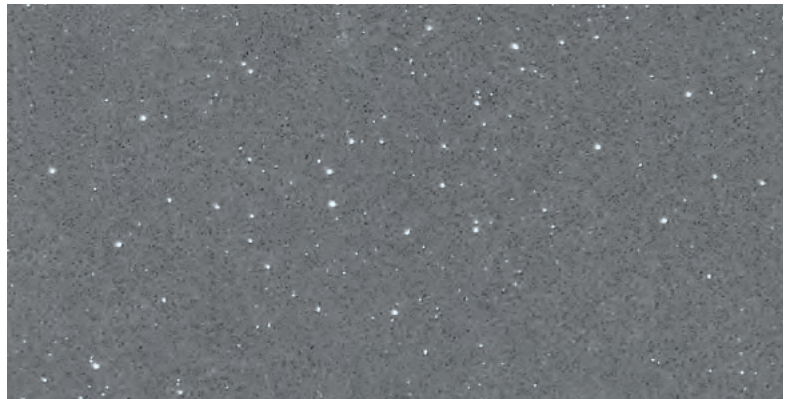


## Grey Reflection

---

QZ137

Grey Reflection is a popular, timeless grey colour with a distinctive mirror chip effect that adds sparkle to any design.



Slab Size: 3200 x 1600 mm

Finish: Polished

Thickness: 20 mm / 30 mm









CONCRETE GRIS HONED - QZ106

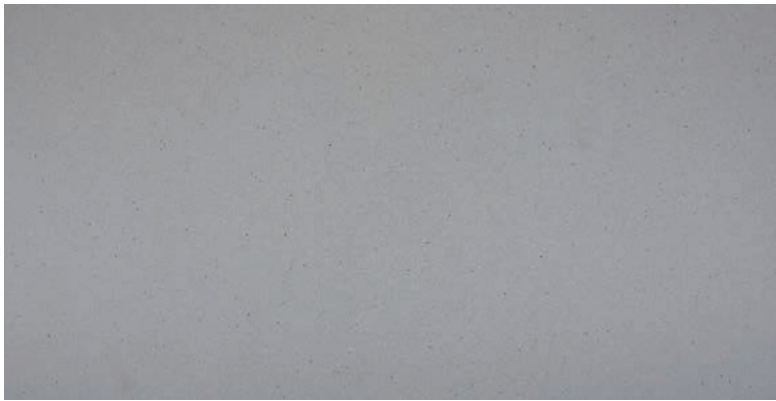


# Concrete Gris Honed

---

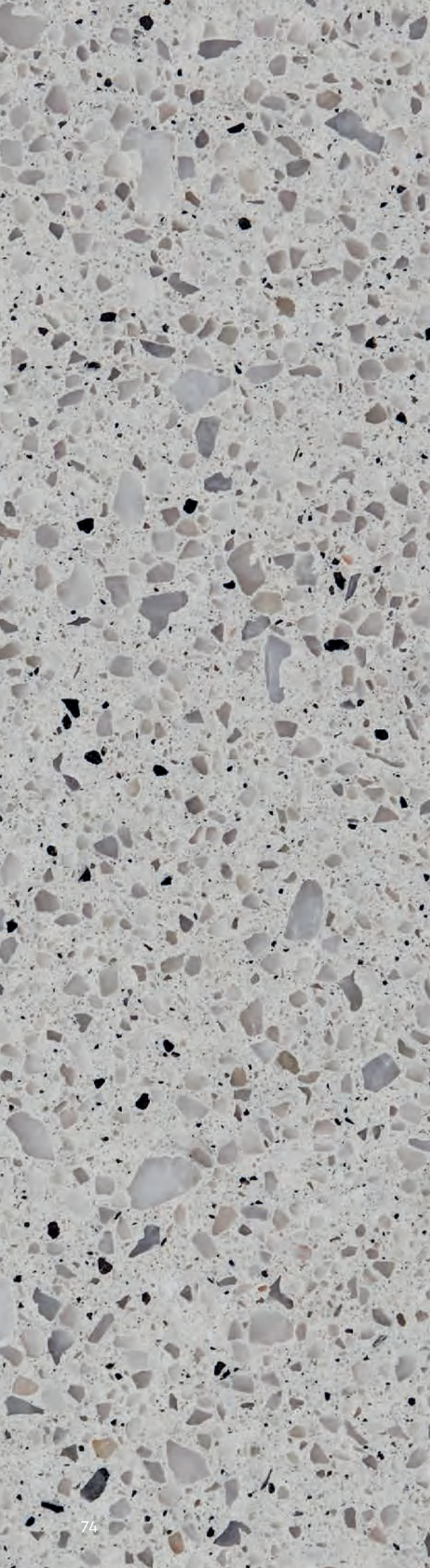
QZ106

Tapping into the industrial trend in the kitchen and the bathroom, Concrete Gris comes in a honed finish to offer all the natural beauty of real concrete with the added benefit of being extremely easy to maintain.



Slab Size: 3300 x 1650 mm  
Finish: Honed  
Thickness: 20 mm / 30 mm



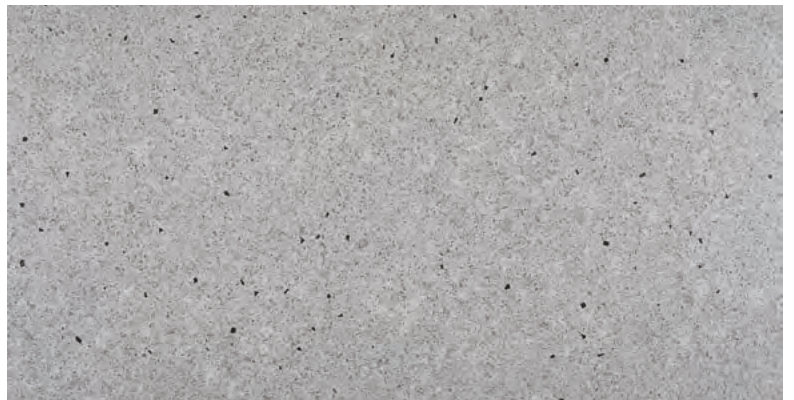


## Venetian Arte

---

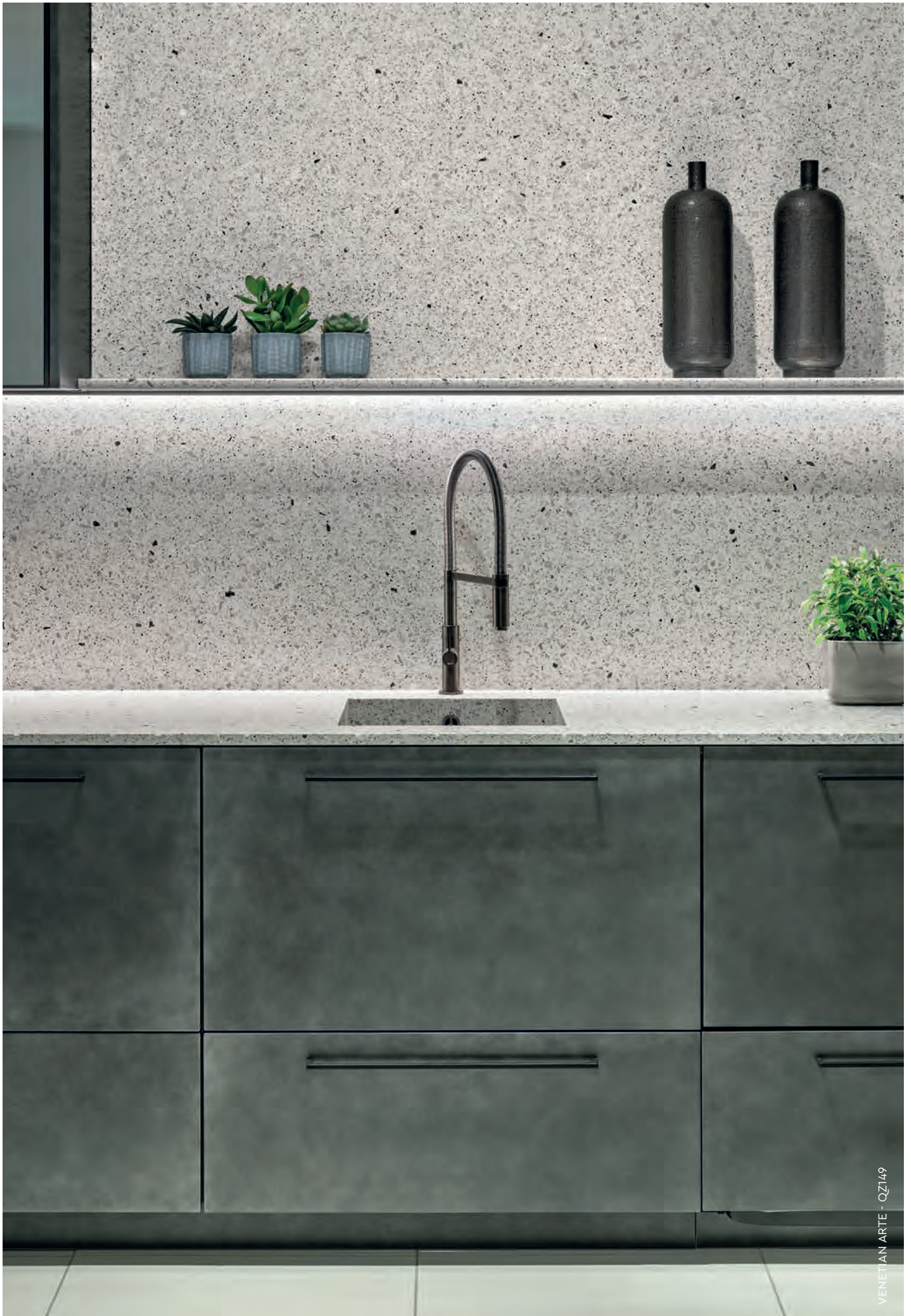
QZ149

Why stick with one shade of grey when you can enjoy several in one surface courtesy of Venetian Arte. Combining seamlessly with any colour scheme, from dark and dramatic, to bold and bright, and any style of room, Venetian Arte has a timeless flair ensuring it can be enjoyed for many years to come.



Slab Size: 3300 x 1650 mm  
Finish: Polished  
Thickness: 20 mm / 30 mm





VENETIAN ARTE - QZ149



# Midnight

---

QZ128

Dark, mysterious and luxurious, Midnight looks best teamed with exposed brickwork, brushed stainless steel or high gloss and the result will be an eye-catching, contemporary design that will last the test of time.



Slab Size: 3200 x 1600 mm

Finish: Polished

Thickness: 20 mm / 30 mm





MIDNIGHT - QZ128J



ULTRA WHITE - QZ100

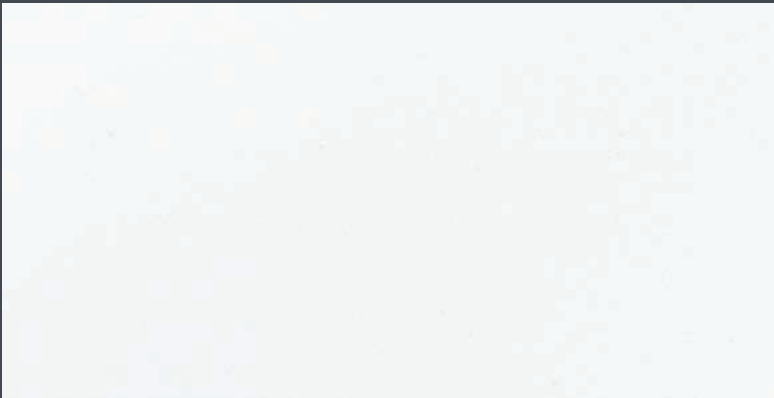


# Ultra White

---

## QZ100

An all-white kitchen never goes out of fashion. Team with white, high gloss furniture for an all-white look or with any colour for a bold contrast.



Close up view

Slab Size: 3300 x 1650 mm  
Finish: Polished  
Thickness: 20 mm / 30 mm





# Quartz Reflection

QZ126

The mirror chip on this popular white quartz surface draws the eye when it catches the light, adding interest to any space while blending seamlessly into its environment.



Close up view

Slab Size: 3200 x 1600 mm  
Finish: Polished  
Thickness: 20 mm / 30 mm

# Arctic Shimmer

---

QZ138

With a dusty sparkle throughout Arctic Shimmer brings glamour to the kitchen or bathroom.



Close up view

Slab Size: 3200 x 1600 mm

Finish: Polished

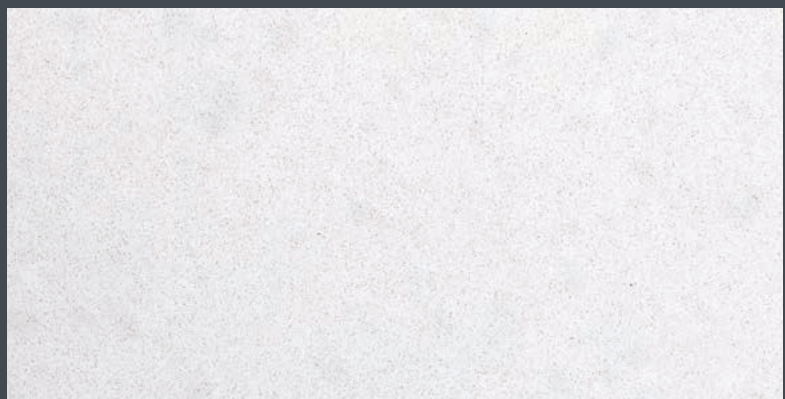
Thickness: 20 mm / 30 mm

# Ice

---

QZ102

With its white and grey tone, Ice is striking in its simplicity, making it a versatile solution for any setting.



Close up view

Slab Size: 3050 x 1400 mm

Finish: Polished

Thickness: 20 mm / 30 mm





ARCTIC SHIMMER - QZ138



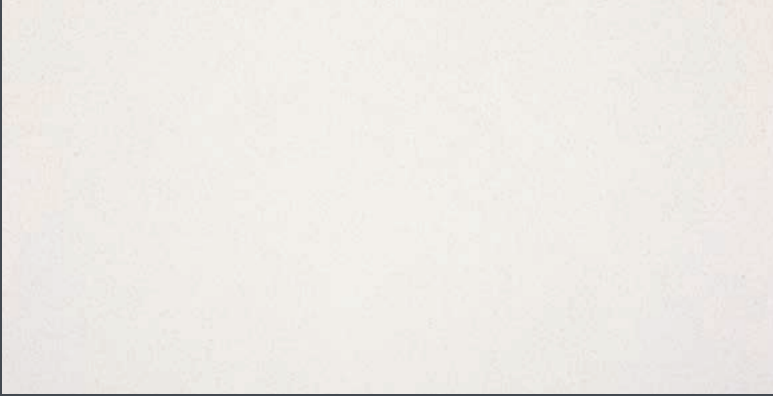


# Chalk

---

QZ130

With its softer white appearance and its small grains Chalk will give any setting a bright, flawless aesthetic.



Close up view

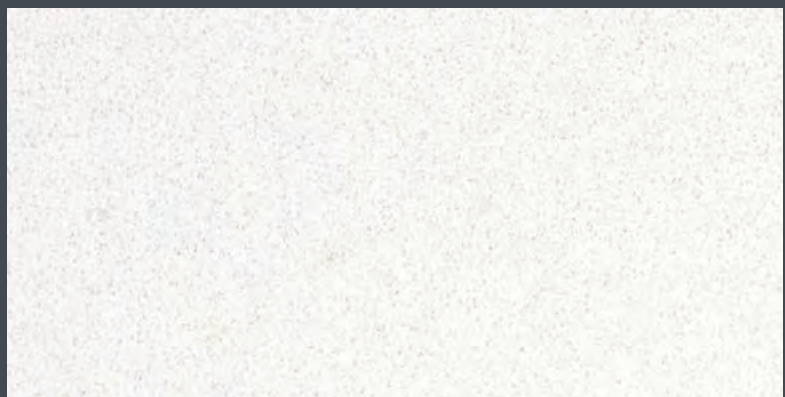
Slab Size: 3200 x 1600 mm  
Finish: Polished  
Thickness: 20 mm / 30 mm

# Polar White

---

QZ131

Polar White provides a neutral blank canvas with small grains as well as being a stand-out feature in itself.



Close up view

Slab Size: 3200 x 1600 mm  
Finish: Polished  
Thickness: 20 mm / 30 mm





## Features & Advantages

---



### Resistant to Wear & Tear

Thanks to CRL Quartz technical characteristics, this is one of the most resistant countertops on the market, ideal for use in the kitchen and bathroom.



### Highly Scratch Resistant

Food can be cut directly on top of the surface without it being damaged. Even so, adapted cutting boards should be used for cutting.



### Stain Resistant

CRL Quartz is not affected by products like solvents, detergents, bleach, oil, vinegar or citrus juice, provided that the stains are cleaned away within 24 hours.



### Heat Resistant

It does not burn or give off smoke or toxic substances when exposed to high temperatures.



### Impact Resistant

CRL Quartz has a high resistance to knocks and impacts.



### Easy to Clean & Care For

No extra care or special products are needed to clean it. Stains can be removed with water or mild cleaning products.



### 25 Year Residential Warranty

Visit [crlquartz.co.uk](http://crlquartz.co.uk) to register your surface and activate your residential warranty.



### Hygiene

Because it is a non-porous surface, the build-up of bacteria or mould is prevented, and food can be placed in direct contact with it.



### 10 Year Commercial Warranty

Visit [crlquartz.co.uk](http://crlquartz.co.uk) to register your surface and activate your commercial warranty.

# Care & Maintenance

---

## Routine cleaning

CRL Quartz is virtually maintenance free and can be cleaned with extreme ease.

For routine cleaning and to wipe off spills, use a damp cloth or paper towel and a small amount of mild soap or non-acidic cleaner. Once clean, rinse and dry the surface thoroughly.

Note that colours available in a honed finish are more sensitive to grease or finger-prints than polished surfaces and may require extra care during routine cleaning due to the different level of smoothness.

## Scratch resistance

Quartz is one of the hardest materials in nature, which is an assurance that your CRL Quartz surface will not easily scratch or chip. However, avoid using sharp objects such as knives or screwdrivers directly on the surface. The use of a cutting board is recommended.

## Heat resistance

CRL Quartz can tolerate moderately hot temperatures for short periods of time. To maintain the natural beauty of the product, do not place hot skillets or roasting pans directly onto the surface but use an insulator or trivet instead.

## Stain resistance

Thanks to their non-porous properties, CRL Quartz surfaces are highly resistant to stains. However, do not allow dirt and residue such as stubborn food or gum stains to harden and remain on CRL quartz surfaces for extended period of time. In case they do, scrape away gently using a small blade or putty remover before cleaning with warm water and soap.

For stubborn or dried spills, use a non-abrasive cleaning pad combined with a small amount of mild soap or specialised stone cleaner.

## Recommended stain remover

Bar Keepers Friend Power Cream

Avoid exposing CRL Quartz to chemicals and solvents, especially paint removers or furniture strippers containing trichlorethane or methylene chloride. Keep away nail polish remover, bleach or cleansers that contain bleach, bluing, permanent markers or inks. Strong abrasive and highly alkaline (outside of 5-9pH) cleansers are not recommended when cleaning CRL Quartz. Always follow the manufacturers' dilution instructions and recommendations.

If any of the substances listed above come into contact with CRL Quartz, rinse the exposed surface immediately and thoroughly with plenty of clean water.



# Technical Data Sheet

TEST PERFORMED	TEST STANDARDS	TEST RESULTS
Absorption	EN-14617-1	<0.03%
Bulk Density	EN- 14617-1	2.15-2.46 g/cm <sup>3</sup>
Flexural Strength	EN-14617-2	31-75 N/mm <sup>2</sup>
Impact Strength	EN-14617-9	3.4 – 7.35 Joules
Thermal Expansion	EN-14617-11	16*10 <sup>-6</sup> – 20.8 * 10 <sup>-6</sup>
Abrasion Resistance	EN-14617-4	23.64-27.5mm
Freeze-Thaw Resistance	EN-14617-5	0.999
Mohs Hardness	EN – 101	6.5-7.5
Slip Resistance	ASTM C 1028-07	Coefficient of friction > 0.5*
Stain Resistance	ASTM C 1378-04	Not Affected
Wear and Cleanability	ASTM Z124 6.5.3	Pass
Cigarette Test	ASTM Z124 6.5.4	Pass
Surface Burning	ASTM E-84	Class A
Chemical Resistance	EN-14617-10	Class C4
Static Coefficient of Friction	ASTM C1028-07	Dry average- 0.68*
		Wet average- 0.5*
Flame Spread	ASTM E-84	FSI<10 for 3 cm and <15 for 2 cm

\*: The values are for polished finish

NOTE: These results are indicative only. The values quoted above are average for different CRL Quartz Surfaces products of 20mm thickness. The test results may vary depending on the thickness, colours, special additives and also the batches of the products and based on grain size of the quartz.



Ceralsio  
CERAMIC SURFACES

## Explore our 2021 Ceralsio Collection

Ceralsio is the ultimate choice  
of ceramic surfaces for indoor  
and outdoor applications.

Available in over 30 exclusive designs,  
and in large-format slabs, the range is  
completely non-porous, scratch and UV  
resistant, and thermally stable.

To find out more and explore the  
range visit: [www.ceralsio.co.uk](http://www.ceralsio.co.uk)



MONTBLANC WHITE - NATURAL CER412N





Samples are free to order online at:  
[crlquartz.co.uk](http://crlquartz.co.uk)



**CRL STONE**

Charles Babbage Avenue  
Kingsway Business Park  
Rochdale OL16 4NW

Telephone: 01706 863 600  
International Freephone: 00 800 0421 6144  
E-mail: [crlquartz@crlstone.co.uk](mailto:crlquartz@crlstone.co.uk)

[crlquartz.co.uk](http://crlquartz.co.uk)

QZ21UK